

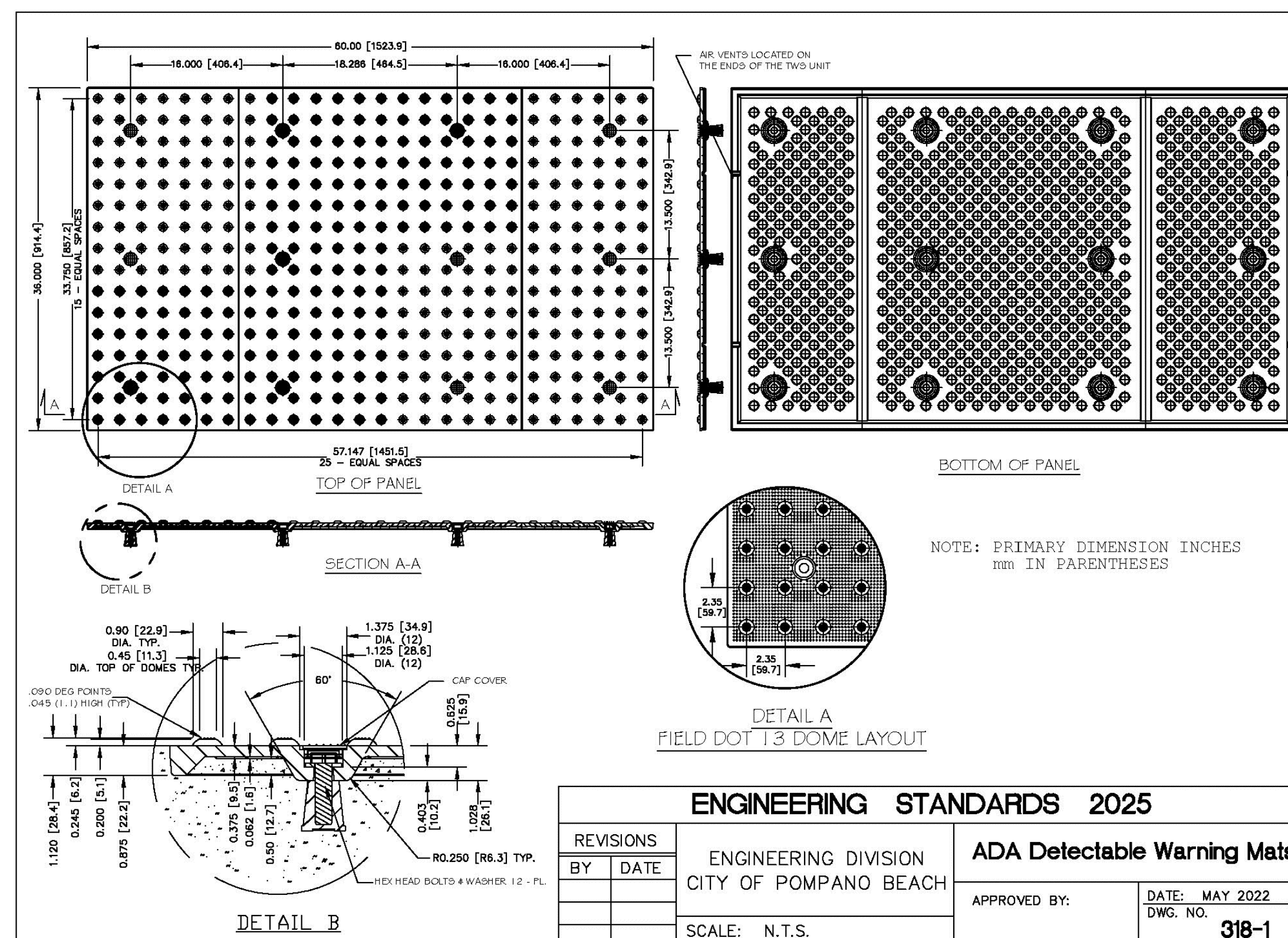
ACCESSIBLE PARKING SPACE SIGN

N.T.S.

SIGN NOTE

ACCESSIBLE PARKING SPACES SHALL BE POSTED WITH A FIXED PARKING SIGN NO LESS THAN 60" Min. TO THE BOTTOM OF THE SIGN AND WHICH BEARS THE INTERNATIONAL SYMBOL OF ACCESSIBILITY MEETING THE REQUIREMENTS OF THE STANDARDS AND THE CAPTION "PARKING BY DISABLED PERMIT ONLY." AND MUST INDICATE THE PENALTY FOR ILLEGAL USE OF THE SPACE.

ENGINEERING STANDARDS 2025			
REVISIONS		ENGINEERING DIVISION CITY OF POMPANO BEACH	ACCESSIBLE SPACE SIGN
BY	DATE		
SCALE: N.T.S.			DATE: MAY 2022 DWG. NO. 300-5



02/18/2026
301 East Atlantic Blvd.
Pompano Beach, FL 33060
PH: (954) 788-3400

Florida Engineering Business License: CA7928
Florida Surveyor and Mapper Business License: LB6860
Florida Landscape Architecture Business License: LC2600045

[illegible]

PRELIMINARY PLAN
NOT FOR CONSTRUCTION

**THESE PLANS ARE NOT FULLY PERMITTED
AND ARE SUBJECT TO REVISIONS MADE
DURING THE PERMITTING PROCESS.**

RESPONSIBILITY FOR THE USE OF THESE
PLANS PRIOR TO OBTAINING PERMITS FROM
ALL AGENCIES HAVING JURISDICTION OVER
THE PROJECT WILL FALL SOLELY UPON THE
USER.

ISSUE DATE: 11/12/2025

DESIGNED BY: NW

DRAWN BY: FA

CHECKED BY: NW

BID-CONTRACT:	
----------------------	--

NILES T. WARRICK, P.E.
FLORIDA REG. NO. 94320
(FOR THE FIRM)

CLIENT

JADIAN IOS

PROJECT

**951 SW 12th AVENUE
POMPANO BEACH FL**

SHEET TITLE

PAVEMENT MARKING AND SIGNAGE DETAILS

SHEET NUMBER **CM-502**

PROJECT NUMBER	15427.00
----------------	----------